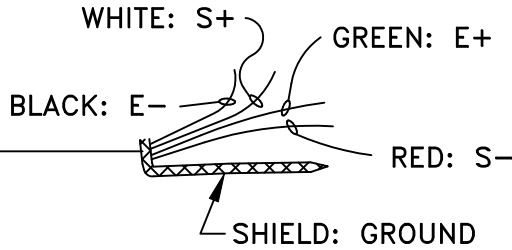


10 FT. 4-COND.  
AWG 30 WITH  
OVERALL SHIELD  
& JACKET



TAPPED HOLE IN END OF THE  
SENSOR FOR INSTALLATION OF  
PULLEY, ROLLER, SHEAVE, ETC.  
1/4-20 X .50DP STANDARD, OTHER  
SIZES MAY BE SPECIFIED

BLACK HARD ANODIZED  
SENSOR HOUSING  
WITH INTEGRAL  
OVERLOAD PROTECTION

MOUNTING  
FLANGE

INTERNAL  
STRAIN GAGED  
SENSOR ELEMENT

∅1.312

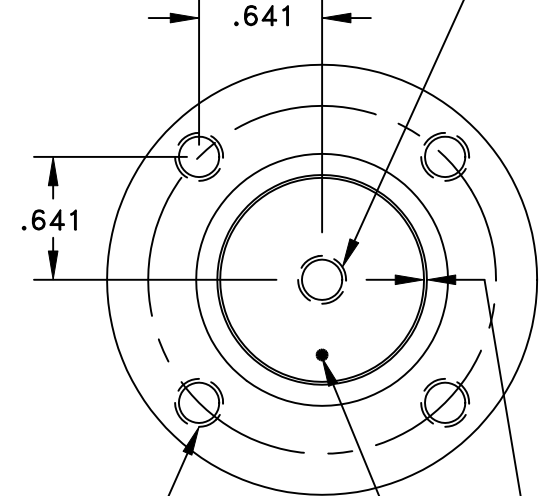
∅1.092

∅2.240

.625

3.375

DIRECTION OF FORCE



1/4-20 TAPPED  
MOUNTING HOLE  
4 HOLES  
EQUALLY SPACED  
REFERENCED TO  
FORCE INDICATOR

CLEARANCE BETWEEN  
SENSOR ELEMENT AND  
HOUSING MUST BE KEPT  
FREE. SENSOR ELEMENT  
MUST ONLY CONTACT THE  
ROLLER MOUNTING HARDWARE.

NOTES:

- DESIGNED FOR EASY MOUNTING TO THE MACHINE FRAME BY INSERTING THROUGH A 1-3/8" DIA. HOLE.

**RANGES AVAILABLE: 0-12 LBS TO 0- 25 LBS  
WRAP ANGLE DEPENDENT**

**TMI** Tension Measurement, inc

P.O. BOX 740755 ARVADA, CO. 80006 USA  
TEL. (303) 465-1011 • FAX (303) 466-9761

**FRONT CANTILEVER FLANGE MOUNT  
TENSION SENSOR**

PART  
NO: CF2F SERIES

MATERIAL:  
ALUMINUM

TOLERANCES UNLESS  
OTHERWISE SPECIFIED:  
U.S.O.  
1 PLC. DEC. ±.030  
2 PLC. DEC. ±.015  
3 PLC. DEC. ±.005  
ANGULAR ± 30"

SCALE: 1 = 1

DATE: 8-09

BY: TMI