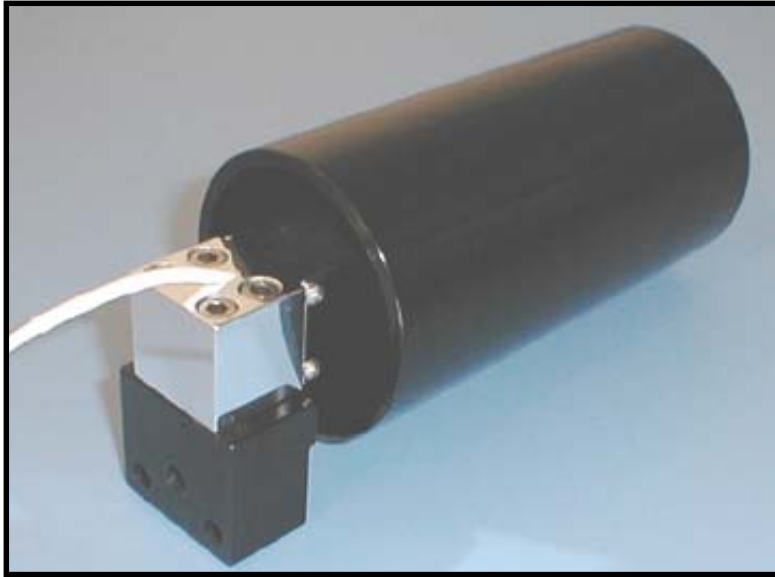
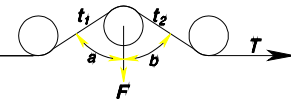


Dynamic *Tension Measurement*



Multi-Purpose WC3-Series

These low profile tension transducers can be cantilevered from a vertically oriented wall or backplane for precise in-line tension monitoring. You specify the roller spacing distance from your vertically oriented wall/backplane with options from 1.5" to 2.5". Web roller lengths from 6.0" to 8.0" are offered. Higher temperature versions and vacuum compatible options are also available. For dimensions request sensor drawings. For different mounting options ask about our other web tension sensors.

VERSATILE LOW PROFILE SENSORS

WC3-Series Cantilever Web Models

Webs - Films - Tapes - Tows - Straps - Etc.

Specifications:

Sensor Ranges: From 0 to 50 lb. (wrap angle dependent)

Operating Temperature: -40° F to 180° F

Excitation Voltage Recommended: Regulated 5 - 10 VDC

Bridge Resistance: 350 ohm nominal

Output Signal: 1 mV/V full scale nominal

Resistance to Ground: Exceeding 500 Megohms

Linearity: 0.25% or better anywhere in the FS range is typ.

Accuracy (Total Error): maximum 1% of reading (typ. .25% - .5% anywhere in the FS range)

Repeatability: 0.25% - 0.5% Typ. anywhere in the FS range

Transducer Materials: Typically Aluminum

Rollers: Web roller lengths from 6" to 8" . Standard roller diameter is 2.976"

Low Profile Installation: Specify 1.5" to 2.5" roller edge spacing from your vertical mounting surface.

Shielded Cable: P.T.F.E. insulated, with braided shield. 10 ft. standard, other lengths available.

Request cable exit from 'top' or 'rear' of sensor body. (Top exit shown in photo.)

Overload Protection: 100% Typ - Range Dependent. Sensor housing provides physical overload stops for added overload protection.

For Technical Information
Or to Place an Order
Tel: (303) 465-1011