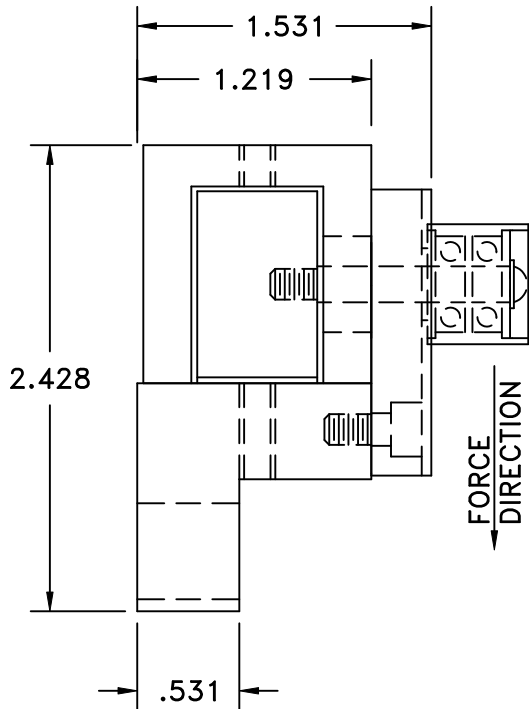
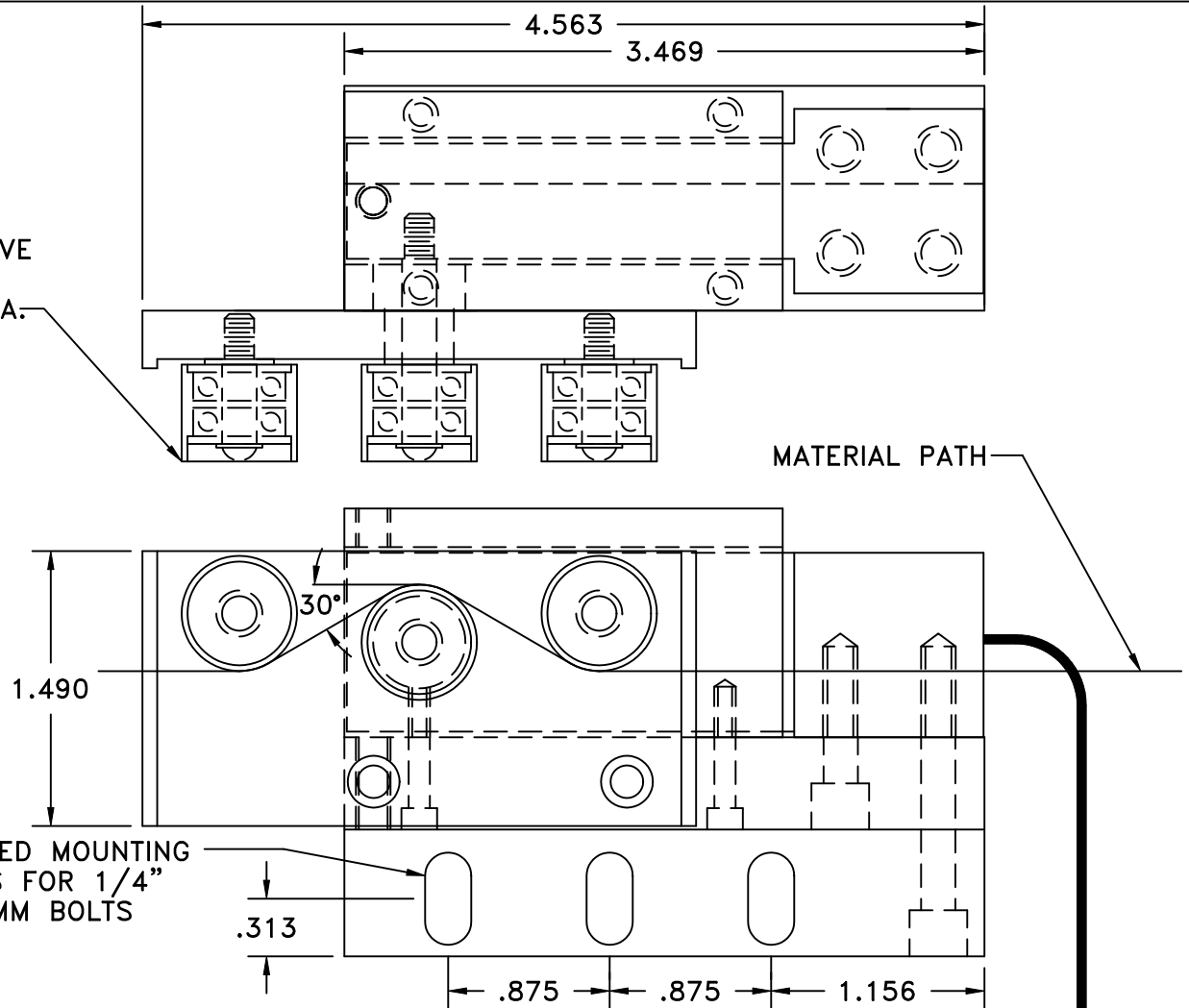


VARIETY OF ROLLERS
AVAILABLE. U-/V- GROOVE
AND WEB/FILM/TAPE
CYLINDRICAL TO .750" DIA.

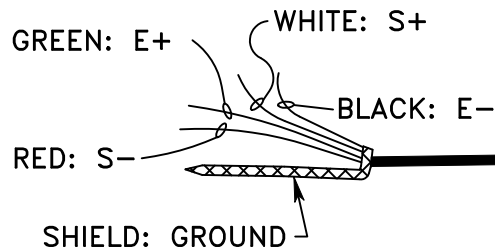


SENSOR MOUNTING BASE,
FACEPLATE AND COVER
BLACK HARD ANODIZED
ALUMINUM.



SLOTTED MOUNTING
HOLES FOR 1/4"
OR 6MM BOLTS

MATERIAL PATH



10FT. 4 COND. 30 AWG SHIELDED
PTFE INSULATED CABLE TO
INTERFACE WITH SIGNAL CONDITIONER/
INDICATOR

TENSION RANGES FROM 1 TO 2000 GRAMS

TMI *Tension Measurement, inc*
Colorado, USA • Tension-Measurement.com
TEL. (303) 465-1011 • FAX (303) 466-9761

**MPS SERIES TENSION SENSOR
WITH 3" WIDE FACEPLATE**

PART NO:
MPS3-SERIES

MATERIAL:
ALUMINUM

TOLERANCES UNLESS
OTHERWISE SPECIFIED:
U.S.O.
1 PLC. DEC. ±.030
2 PLC. DEC. ±.015
3 PLC. DEC. ±.005
ANGULAR ± 30"

SCALE: 1 = 1
DATE: 12-1998
BY: TMI